



NEWSKILL

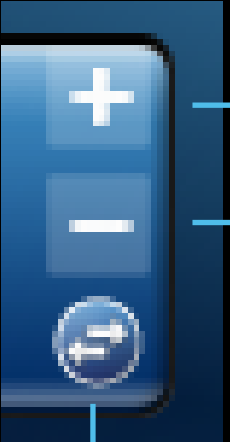
SYLVANUS PRO

PROFESIONAL E-SPORTS GAMING HEADSET

QUICK GUIDE

PROFESIONAL RGB GAMING MOUSE





This options enable you to add and remove personalized profiles.

Press this button to change profile

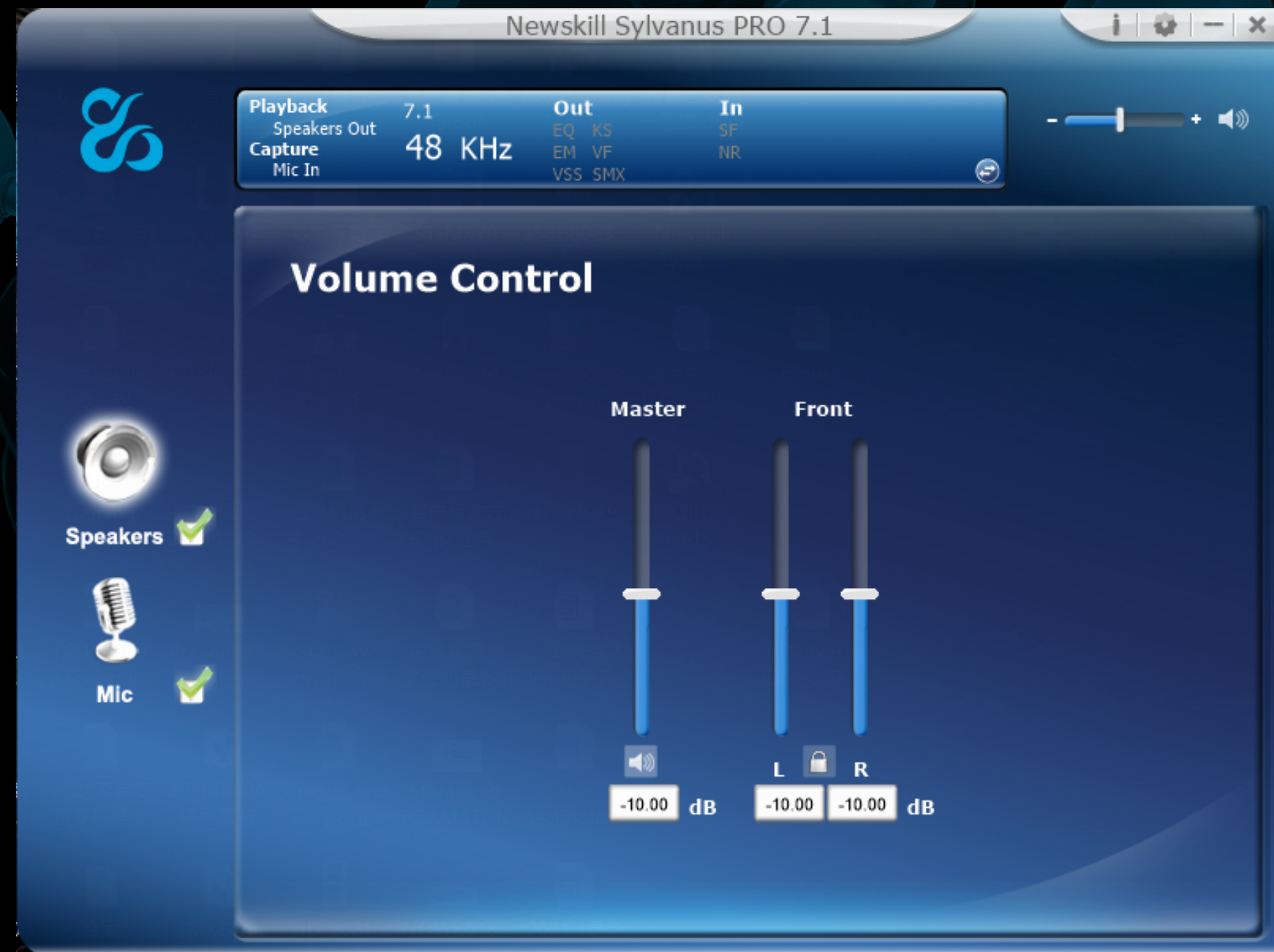
This box shows headset's current configuration and enabled functions.
By pressing button allows you to create and to select configuration profiles.
Hi-Fi (enabled by default), PRO and music are the preset profiles.



Click to change setting.

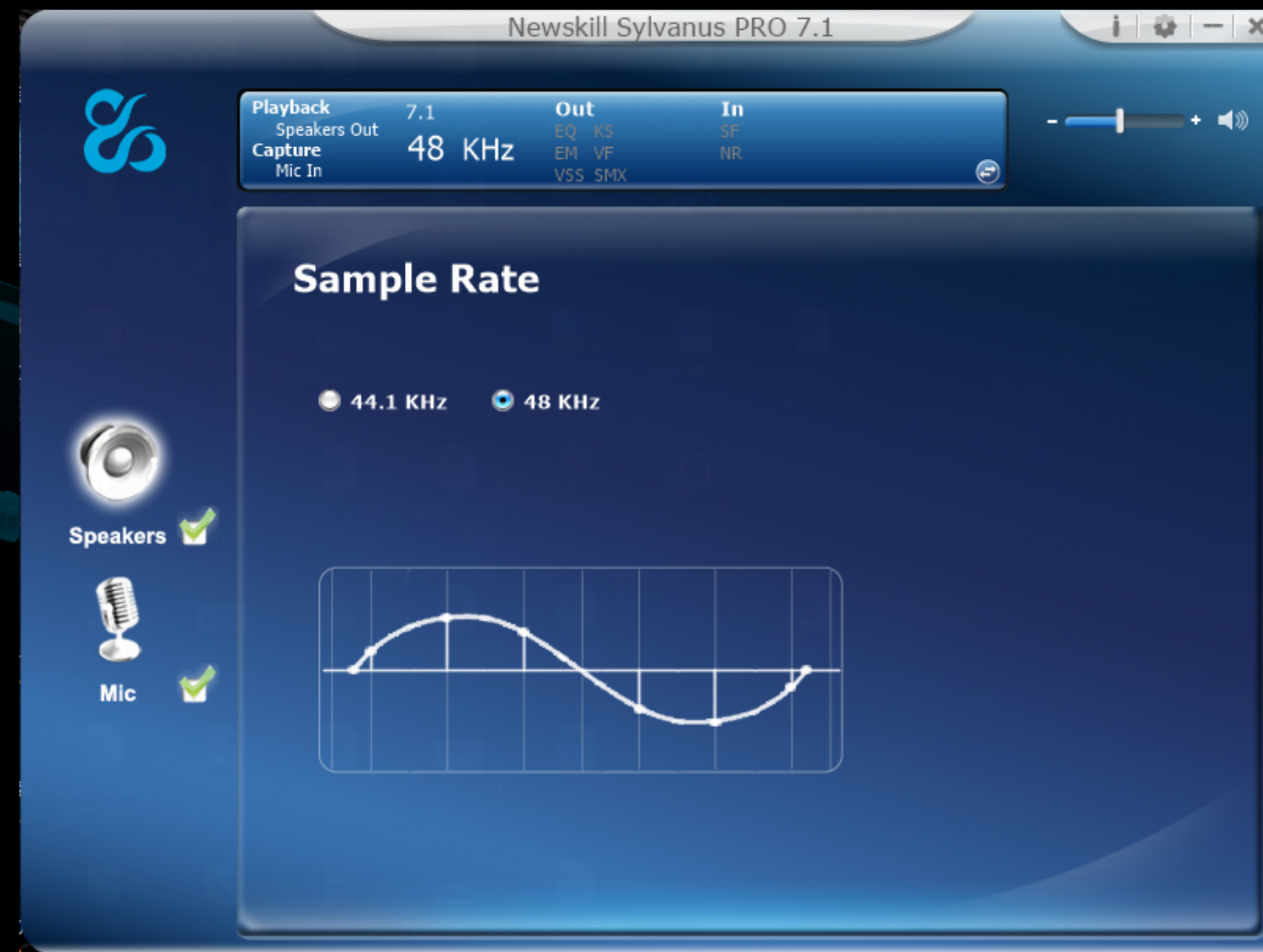
Right click (or double click)
the speaker or mic icon enables you to see more options.

SOFTWARE FUNCTION INSTRUCTION **SPEAKERS**



Volume control

The volume control tab on speaker is where you can control head-set's master volume and each channel separately.



Sample rate

In this tab is where you can set sample rate on 44.1KHz or 48KHz (most of music records uses 44.1KHz).

SOFTWARE FUNCTION INSTRUCTION **SPEAKERS**



Equalizer

By enabling graphic equalizer you can modify different sound frequencies to reach your desired sound. In addition to the preset equalizations you can manage and save your own configurations.



Environment Effects

By enabling this option allows you to select among different combinations of default modifications of environmental characteristics of sound, enabling you to choose listening to our favorite tracks as if we were in the middle of a concert hall, in the middle of a city and even dizzied after a busy night. In addition, we can modify quickly and intuitively the size of the virtual room in which we reproduce our music.



NEWSKILL

SYLVANUS PRO

PROFESIONAL E-SPORTS GAMING HEADSET

SOFTWARE FUNCTION INSTRUCTION **SPEAKERS**



7.1 Virtual Speaker Shifter

Here is where you can modify placement of each speaker with respect the whole and concerning receiver.



Xear SingFX

Key shifting allows you to increase and decrease pitch in semitone steps without modifying timing.

Vocal Fading allows you to decrease medium frequencies to reduce voices without graphic equalizer.

SOFTWARE FUNCTION INSTRUCTION **SPEAKERS**



7.1 Virtual Speaker Shifter

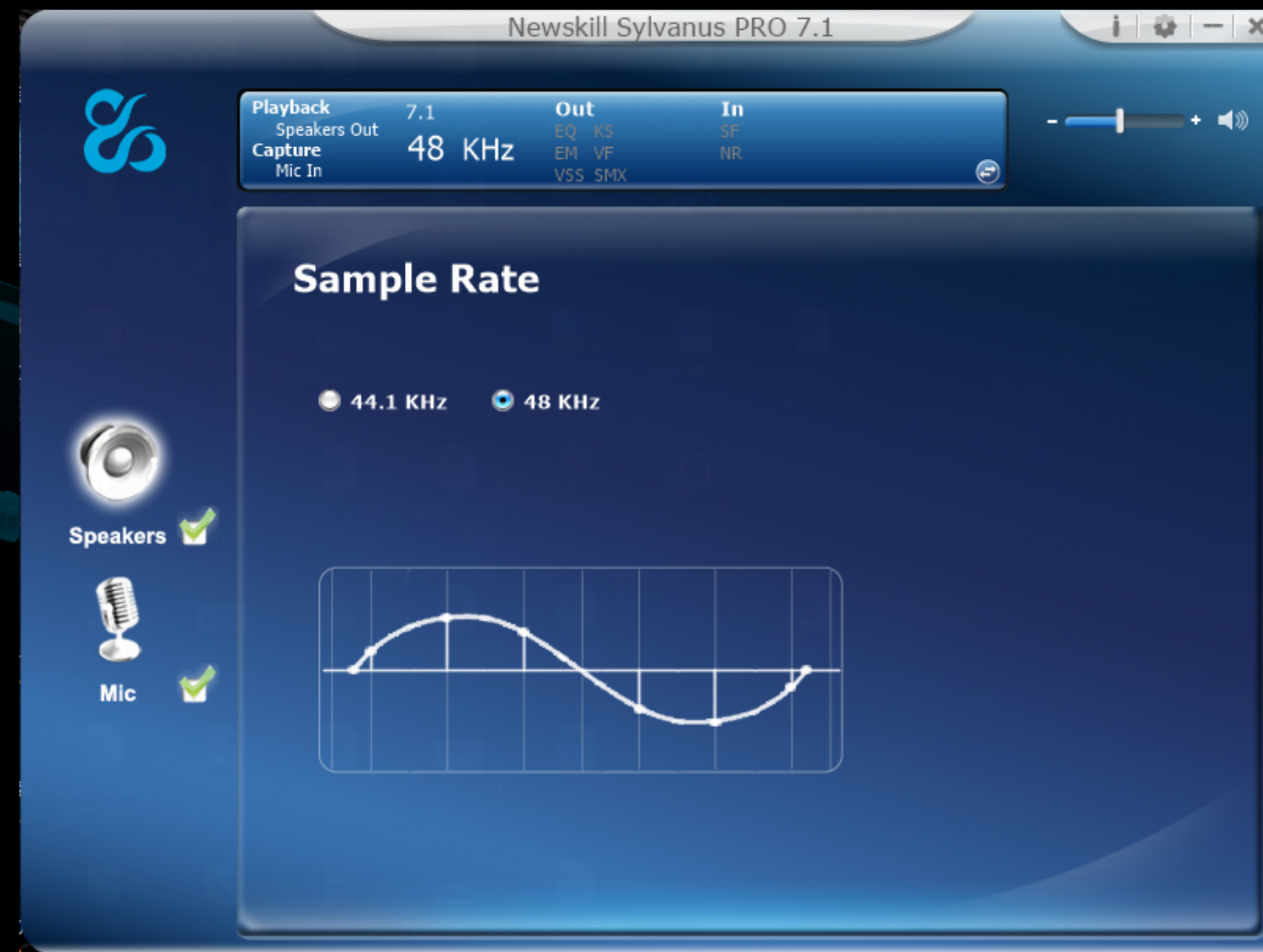
While virtual 7.1 is enabled, Xear Surround Max allows you to enhance surround effect and its sound experience by placing you in the middle of the action.

SOFTWARE FUNCTION INSTRUCTION MICROPHONE



Volume control

By enabling graphic equalizer you can modify different sound frequencies to reach your desired sound. In addition to the preset equalizations you can manage and save your own configurations.



Sample rate

In this tab is where you can set sample rate on 44.1KHz or 48KHz (most of music records uses 44.1KHz).

SOFTWARE FUNCTION INSTRUCTION MICROPHONE



Xear SingFX

Microphone Echo allows you to modify your microphone input echo. Magic voice has four preset voice modifications: Monster, Cartoon, Male and Female.



Noise Reduction

Noise reduction can help you to reducing the background noise by different level.